

SERVER ROOMS

Protect your servers and assets with high performance in any climate.



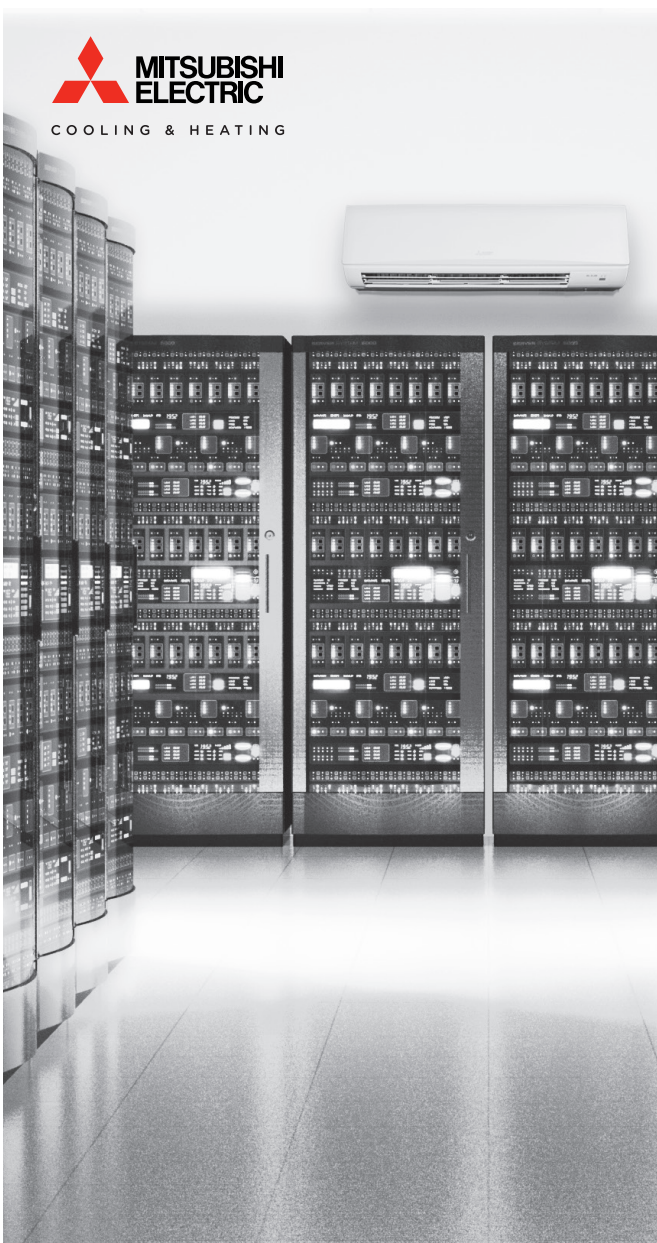
COMMERCIAL KITCHENS

Whether you're cooking for a small party or a full banquet, keep your kitchen comfortable.



GUARD SHACKS

No matter the temperature outside, everyone is secure with Mitsubishi Electric Zoned Comfort Solution™.



MITSUBISHI ELECTRIC
COOLING & HEATING

ZONED COMFORT SOLUTIONS™

ULTIMATE COMFORT. IN ANY ZONE.
WITH RELIABLE COOLING/HEATING IN ANY CLIMATE.

MITSUBISHI ELECTRIC
COOLING & HEATING

MAKE COMFORT *Personal*™

©2017 Mitsubishi Electric US, Inc. H2i is a registered trademark of Mitsubishi Electric. The three-diamond logo is a registered logo of Mitsubishi Electric Corporation. Product descriptions and specifications are based upon current information at time of printing. All designs, features, and specifications are subject to change without notice. For updated product information, please visit www.mitsubishicomfort.com

SKU: ME-P SERIES-TRI

©2017 Mitsubishi Electric US, Inc. All rights reserved.

MITSUBISHI ELECTRIC ZONED COMFORT SOLUTIONS™

Perfect for all light commercial applications.



CONFERENCE ROOMS

Keep the room cool while coming up with the hot ideas.



SMALL OFFICES

Using a Zoned Comfort Solution™ in your small office space keeps you comfortable.

- ▶ Zoned temperature control
- ▶ Low ambient cooling to -20°F with advanced side wind baffles
- ▶ Up to 40% more efficient than central air
- ▶ Whisper-quiet operation
- ▶ Auto cooling/heating changeover
- ▶ Peace of mind for critical service and other high reliability locations
- ▶ Remote control technology via **kumo cloud™**



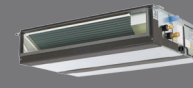
Wall-mounted indoor unit



Ceiling-suspended indoor unit



Ceiling-cassette indoor unit



Horizontal-ducted indoor unit



PVA Multi-position air handler



Outdoor unit

Customize your comfort, customize your look.

Choose from different styles of ductless and ducted indoor units. Our solutions can be customized for any home or small business.

Units are not to scale.